



Lake Erie
WATERKEEPER®



Audubon
PENNSYLVANIA

THE
FRENCH
CREEK
watershed
A COMMUNITY TREASURE

Pennsylvania Native Species Shrubs & Trees Recommended for Storm- water Management in Erie County.

Compiled by:

Judy Acker, Education and Outreach Coordinator,

Audubon Pennsylvania



All plants marked with an **BF**

Are available at:

Beechwood Farms Nature Reserve

Audubon Center for Native Plants

614 Dorseyville Road,

Fox Chapel Borough Pittsburgh, PA 15238

Phone: 412-963-6100

All plants marked with an **E**

Are available at:

Ernst Conservation Seeds

9006 Mercer Pike Meadville, PA 16335

800-673-3231 OR 814-336-2404

(Sometimes plugs, potted and sometimes by seeds only)

All plants marked with a **PC**

Are available at:

Pampas Creek Perennials Nursery & Greenhouse

6482 Galmish Road Cochranon, PA 16314

814-425-3080

All plants marked with a **J**

Are available from:

Johnston's Evergreen Nursery Inc.

1000 Wales Road Erie, PA 16150

814-739-2820

All plants marked with a **SY**

Are available from:

Scotland Yards Greenhouse

12555 Fry Rd Edinboro, PA 16412

(814) 734-6700

All plants marked with **S**

Are available at:

Stans Garden Center

5001 Buffalo Road

Erie, PA 16510

Phone: 814-899-5424

OR

Stans Garden Center

5341 West Lake Road

Erie, PA 16505

814-835-6960

All plants marked with **JJW**

Are available at:

JJ Wurst Landscape Contractors

& Garden Center

8334 Edinboro Road

Erie, PA 16509

814-476-7410

All plants marked with **FE**

Are available at:

Fairview Evergreen Nurseries Inc.

7463 W Ridge Rd,

Fairview, PA 16415

(814) 474-5712

All plants marked with **LG**

Are available from:

Locust Grove Nursery

2308 Old State Road

Waterford, PA 16441

814-796-3582

****REMEMBER plant lists change because of sales and other factors so contact the Nurseries for availability.**

****PLEASE MAKE SURE BOTH LATIN NAMES ARE CORRECT BEFORE YOU BUY THE PLANT!**

Native PA Species Shrubs for Stormwater Management in Erie County.

Red Chokeberry-- *Aronia arbutifolia* / *Photinia pyrifolia* —E, J, S

Native habitat: swamps, bogs, moist woods. A colonial shrub species, grows from 3' to 15' tall, prefers **full sun**, low drought tolerance, blooms from April to July, white flowers, produces pear shaped red fruit that persists into winter. **Moist rich acidic soils**. Fall foliage red to red orange. **A source of wildlife cover and fall food.**



Black Chokeberry-- *Aronia melanocarpa* / *Photina* —E, JJW, S

Native habitat: swamps, bogs, wet or dry woods. Shrub grows to 12' tall, somewhat shade tolerant, **moderate drought tolerance**, blooms from March to June, white flowers produce black fruit that persists into winter. Prefers **part shade and moist acidic soils**. **Good source for wildlife cover and fall food.**



Kinnikinnik/Silky Dogwood—*Cornus amomum*—E, S

Native habitat—Moist fields, meadows, swamps, moist woods **Part Shade to Shade** in **Clay, Loam, or Sandy soil**. A shrub that grows to 10' tall, moderate shade tolerance, low drought tolerance, blooms from May to July with attractive white, greenish whitish or yellow flowers clusters in spring, produces blue and white fruit in the fall. **The thick low vegetation provides excellent habitat for a variety of wild life and produces abundant fruit that is eaten by many birds.**



Red-osier Dogwood—*Cornus sericea*—E, J, FE, S

Native Habitat: swamps, stream banks, moist fields, thickets **Prefers part shade and moist, well drained soils** but is adaptable to a wide range of soil and climatic conditions. A multiple stemmed shrub grows to 10' tall, moderate shade tolerance, moderate drought tolerance, blooms from June to August, attractive clusters of white flowers produce white fruit. Very conspicuous red branches in winter. The thick low vegetation provides excellent habitat for a variety of wildlife, **produces abundant fruit that provides fall and winter food for a variety of birds.**



Native PA Species Shrubs for Stormwater Management in Erie County.

Witch hazel-- *Hamamelis virginiana*—E, J, SY, S

Native habitat: Rich rocky woods. A Multiple stemmed shrub with crooked spreading branches with lettuce green leaves that turn brilliant gold in fall. Prefers **rich, well-drained acid based soil**. Bark is smooth and gray. Averages 10-15' but can grow to 30' tall, **sun to moderate shade**, low drought tolerance, blooms from September to November with strap like crumpled yellow flowers. **Produces small brown nuts in the fall which provide fall food for many forms of wildlife, provides mid-story nesting habitat.**



Mountain Laurel—*Kalmia latifolia*—BF, FE, S

PA State flower. Found in southern part of the watershed on dry to moist acidic woods and slopes. A broadleaf evergreen, many-stemmed, thicket-forming shrub or sometimes a small tree with short, crooked trunk; stout, spreading branches; a compact, rounded crown; and beautiful, large, bell-shaped, white to pink flowers with deep rose spots inside that occur in flat-topped clusters. The leaves are oval, leathery, and glossy, and change from light-green to dark-green to purple throughout the year. Prefers **part shade and cool, moist acidic rocky or sandy soils**. All parts are highly toxic, **Attract birds and larval host for Laurel Sphinx moth.**



Common Elderberry —*Sambucus Canadensis*—BF, E, S

Deciduous, fast-growing, suckering **shrub**. Flat-topped, creamy white flower clusters in early summer followed by edible, deep purple berries. Height: 5-12'. Spread: to 12' or more. **Part sun. Moist, average soil.** Best used in informal garden situations and for naturalizing, especially at the wood or meadow edge. Prune back old or weak canes to trunk near the ground in winter every few years. Flowers provide nectar and birds love the fruit. **Rain garden plant.**



Red Berried Elder—*Sambucus racemosa (Pubens)*—BF, JJW, S

Deciduous, fast-growing, suckering shrub. Flat-topped, creamy white flower clusters blooms earlier in spring and produces bright red fruits in early summer. Height: 4-10'. Spread: 3-8' or more. **Part sun. Moist, average soil.** Best used in informal garden situations and for naturalizing, especially at the wood or meadow edge. Prune back old or weak canes to trunk near the ground in winter every few years. ****The stems, roots and foliage are poisonous or toxic. Flowers provide nectar and birds love the fruit. Rain garden plant.**



Native PA Species TREES for Stormwater Management in Erie County.

Red Maple—*Acer rubrum*—J, E, FE, JJW, S

Found in dry to moist woods, swamps and bogs. A single stemmed deciduous tree that grows from 60' to 120' tall, named for its often red autumn leaf display. **Sun to shade** tolerant, low drought tolerance, **tolerant of most soils, but prefers slightly acid, moist conditions**; blooms from March to May, red flowers, seed mature in spring. Limited use for maple syrup but **provides food, browse and nesting sites for wildlife**. **Leaves and bark poisonous to livestock**. Larval host to **Cecropia Moth**.



Silver Maple—*Acer saccharinum* L—SY, S

Found in moist woods, stream banks and alluvial soils. Prefers **sun to shade with rich wet to moist acidic soils**. A large deciduous tree with short, stout trunk, few large forks, spreading, open, irregular crown of long, curving branches, and graceful deep cut-leaves with a silvery underside. Grows 75-100 ft. tall with a oval or rounded crown. Plump, red flower buds are visible in winter and the first to bloom in spring. Fall color ranges from yellow-brown to yellow tinged with bright red. Sugar can be obtained from the sweet sap but yield is low. **Larval and nectar source for Cecropia silkmoth**.



Sugar Maple—*Acer saccharum*— J, E, SY, JJW, S

Often found in moist woods, wooded slopes, ravines, alluvial soils. A single stemmed large tree, with rounded, dense crown and striking, multicolored foliage in autumn. Grows from 60' to 100' tall, **prefers sun but is shade tolerant**, moderate drought tolerance, **prefers rich, moist, well-drained soils**, susceptible to salt, excessive heat, and leaf scorch in drought. Blooms from February to June, yellow flowers, seeds mature in fall. Excellent source for maple syrup and timber, **provides food and nesting sites for wildlife**. **Valuable to honey bees**.



Native PA Species TREES for Stormwater Management in Erie County.

Common Serviceberry—*Amelanchier arborea*— BF, PC, SY, LG, S

Also known as Shadbush, this deciduous small tree grows from 15-25 ft. and is often found on rocky bluffs and upper slopes. It prefers **sun to part shade and dry well drained acidic soil**. The white flowers occur in April and May in drooping clusters, appearing before the leaves. Young leaves are covered with soft, woolly hairs that disappear as the leaf matures. The plant's ornamental bark is gray and smooth but streaked with fissures; often with a reddish cast. Old bark is scaly. Small, edible berries are reddish-purple. The leaves may turn wine-red in fall. The names Shadbush allude to the fact that the showy masses of white flowers tend to occur at the same time that shad ascend the rivers in early spring to spawn. This is the plant that is commonly sold in the nursery trade as *Amelanchier canadensis*. **Attracts bees and birds.**



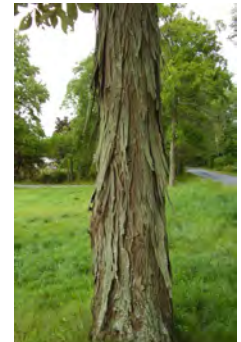
Hornbeam / Ironwood-- *Carpinus caroliniana*—E, S

Also known as Blue beech, Muscledwood or Ironwood because of the very hard wood. Found in rich moist woods and stream edges. Small, shrubby slow growing tree with one or more short trunks angled or fluted, long, slender, spreading branches, and broad, rounded crown growing to 40 ft. The graceful, drooping branches and slender trunk are pale gray, smooth and sinewy with twisting, muscle-like bulges. Shiny, bluish-green, deciduous leaves become scarlet-orange in the fall. The hanging fruit is papery in texture. **Shade tolerant**, low drought tolerance, **moist, rich, deep acidic soils**. Blooms in April. **Provides food; seeds, buds and catkins for birds and wildlife.** **Larval Host: Eastern Tiger Swallowtail, Striped hairstreak, Red-spotted Purple, Tiger swallow-tail.**



Shagbark Hickory-- *Carya ovata*—BF, S

Found in low moist woods, stream banks, swamps, flood plains, and bottomland. Medium to large tree with height: to 70'. Width: to 35'. Blooms yellow-green in spring. Produces thick shelled edible nuts and golden or bronze leaves in fall. Distinctive, gray bark that peels in long, tough curls off the straight trunk. Trunk typically narrow and straight with branching that begins half-way up. **Full to part sun. Rich, moist soil, but adaptable.** Must have good drainage. Site carefully. Deep taproot makes transplanting of all but young seedlings impossible. Valuable for fuel and lumber. **Butterfly and wildlife plant.**



Native PA Species TREES for Stormwater Management in Erie County.

Tulip Tree/Yellow Poplar-- *Liriodendron tulipifera*— J,SY, S

A common tree in rich woods. One of the tallest and most beautiful eastern hardwoods, with a long, straight trunk, a narrow crown that spreads with age. **Sun to shade. Rich moist, well drained soils.** Grows up to 150 ft. tall. Distinctive, star-shaped foliage. The leaves are waxy and smooth, and turn bright gold in fall. Showy, yellow-orange, tulip-like flowers are often missed because they are up 50 ft. or higher in the tops of trees. Cone-shaped seed heads remain after leaves have fallen. Pioneers hollowed out a single log to make a long, lightweight canoe. One of the chief commercial hardwoods, its used for furniture, as well as for crates, toys, musical instruments, and pulpwood. **This is a favorite nesting tree for birds and the flowers attract hummingbirds and bees.** Larval Host: Eastern Tiger Swallowtail butterfly.



Black Gum (Tupelo) — *Nyssa sylvatica*—J, SY, LG,S

Found on dry to moist woods, rocky slopes and ridge tops. An attractive, variable-shaped deciduous tree, with many slender, nearly horizontal branches with a dense, conical or sometimes flat-topped crown and glossy waxy foliage turning scarlet in autumn. Grows 30-60 ft. in **full sun to shade** in **moist various acid based soil.** Leaves out late. Good for a bog or water garden area. A bottle-shaped trunk forms if grown in shallow standing water. Deep roots allow for under-plantings of shrubs and wildflowers. Specimen or street tree. **Berries are small and blue and consumed by many birds and mammals. Also a nectar plant for bees.** Protect from deer until well established and sizeable. **Rain garden plant.**



Eastern White Pine-- *Pinus strobus*— BF, J, SY, FE, JJW, S

Found in moist to dry woodlands and forested slopes. A stately canopy tree, 75-100 ft. tall, **Sun, part shade, shade. Prefers fertile well drained dry to moist soils.** Gracefully plume-like in outline, white pine is very distinctive when compared to other conifers. Tufts of light- to bluish-green long needles form feathery clusters of five only toward the ends of the twigs. Cones are 6-8 in. long. The largest northeastern conifer, it is a magnificent evergreen tree with straight trunk and crown of horizontal branches, one row is added a year, becoming broad and irregular. Formerly the most valuable tree of the Northeast, Eastern White Pine is used for construction, millwork, trim, and pulpwood. **Attracts birds and mammals for food and shelter**



Native PA Species TREES for Stormwater Management in Erie County.

Sycamore—*Platanus occidentalis*—E, S

Found near stream banks, low woods, and alluvial soils. A wide-canopied, deciduous tree, 75-100 ft. tall, with a massive trunk and open crown of huge, crooked branches. Grows in **sun to shade in moist, sandy loams or silty clay soils**. The bark of large, old trunks sloughs off in scales or plates leaving a smooth, whitish inner bark making the tree look like camouflage material. Leaves are broad, blade often wider than long, long pointed. Globular fruits often persist through December. Large, medium- to dark-green, maple-shaped leaves turn brown in fall. A shade tree, Sycamore grows to a larger trunk diameter than any other native hardwood. **The hollow trunks of old, giant trees were homes for chimney swifts in earlier times. Attracts birds and is deer resistant.**



Quaking Aspen—*Populus Tremuloides* — JJW, S

Found in old fields, open woods, or barrens. A 35-50 ft. deciduous tree with small, nearly round, shiny leaves which quiver in the slightest breeze. Smooth, whitish-green bark becomes furrowed at the trunk's base with age. Silvery catkins appear before leaves. Fall color is bright yellow. **Tolerates sun to shade in sandy, gravely limestone based soils**. An early successional tree after fires, logging and on abandoned fields, it is short-lived and replaced by conifers. The twigs and foliage are browsed by many animals. **Beavers, rabbits, and other mammals eat the bark, foliage, and buds, and grouse and quail feed on the winter buds.**



Wild Black Cherry-- *Prunus serotina*—E

Found in woods, thickets, floodplains and fencerows. A multiple stemmed, easy and fast growing tree, it reaches heights to 80' tall. When open-grown it becomes oval-headed with spreading, pendulous limbs and arching branches. Crowded trees grow tall and slender. Drooping white flowers appear after the glossy leaves have emerged. Prefers **full sun to part shade** and **neutral to acidic soils**. Moderate drought tolerance, blooms in May, white flowers produce purplish black fruit in the fall. While the fruit is edible and used in beverages and cooking, the rest of the plant contains amygdalin and can be toxic if consumed. One of North America's most valuable hardwoods. **Provides food, and nesting sites for wildlife. Fruit consumed by 33 species of birds and many mammals. Also attracts bees and butterflies.**



Native PA Species TREES for Stormwater Management in Erie County.

Northern White Oak—*Quercus alba*—E, FE, JJW, S

A large tree with an irregular shaped, wide spreading crown, with light gray bark that has shallow furrows forming scaly ridges. Twigs are gray to reddish-green; buds are reddish-brown and broadly oval and hairless. Catkins appear just before or with the appearance of new leaves which are 4 - 8 inches long with 5 - 9 lobes that are widest beyond middle with deep sinuses and broadly rounded lobes; dull or shiny grayish green above, light green beneath. Grows to 100' tall, **prefers sun but has moderate shade tolerance**, moderate drought tolerance, blooms in mid spring. Can grow in dry to moist sites but **prefers well drained deep loam or sandy, acid based soils**. The wood is used for furniture, flooring, and specialty items such as wine and whiskey barrels. **The annual acorns provide food for many animals and birds. Attracts butterflies. Larval host to Edwards Hairstreak butterfly.**



Swamp White Oak—*Quercus bicolor* — J, E, JJW, S

A large, wide, round-topped, deciduous tree found in low moist forests. One of the faster growing oaks, its leaves, with their silvery undersides, are typical of those of white oak, yet swamp white oak leaves lack deeply cut lobes and the distal half may have teeth. Tree grows to 100 feet with an irregular crown. Bark is dark gray with deep furrows forming scaly or flat-ridges. Twigs are smooth, light brown; buds light orangish-brown, smooth, and blunt, leaves are glossy dark green above with white velvety hairs beneath. Fall leaf color is golden-brown to russet-red. Moderate shade tolerance, low drought tolerance, blooms in early spring, produces long egg shaped acorns annually. Prefers **part shade** and can thrive in **poorly drained, heavy or fine loams or clay soils that are somewhat acidic**. Swamp white oak produces a hard wood that has been used for construction, cabinet making, boat building, railroad ties, and fencing. **Attracts songbirds, ground birds, water birds and mammals.**



Pin Oak-- *Quercus palustris*—J, E, SY, FE, JJW, S

Found in low moist wet woods, bottomlands and swamps. A popular, graceful lawn tree with regular compact form and fine-textured foliage, Pin Oak is hardy and easily transplanted because the shallow fibrous root system lacks tap roots. Grows to 80' tall, prefers **full sun** but will tolerate shade, low drought tolerance, blooms in spring, small acorns mature and drop early fall. One of the fastest growing oaks, it is straight-trunked tree with spreading to horizontal branches, very slender pin-like twigs, and a broadly conical crown. Pin oak is a strongly pyramidal tree with a distinct central leader with a more graceful, slender appearance than most oaks. Dark-green foliage becomes dark-red in fall. Leaves persist into winter. Will grow in heavy, poorly **drained soils but is intolerant of alkaline soils**. Somewhat tolerant of city conditions, it is easily transplanted, and will tolerate urban conditions in areas well outside its natural range. **Provides food and nesting sites for birds and woodland wildlife. Attracts birds, hummingbirds and butterflies. Larval host for the Gray Hairstreak butterfly.**



Native PA Species TREES for Stormwater Management in Erie County.

Northern Red Oak--*Quercus rubra*-- E, SY, LG, FE, JJW, S

A lowland forest tree, found in dry to moist sites. A single stemmed deciduous tree, grows to 100' tall, moderate shade tolerance, moderate drought tolerance, blooms in mid spring, large acorns mature and drop in early fall. Its straight trunk is clear of branches for some distance above the ground and supports a wide canopy. The dark bark is striped with long, smooth plates separated by deep furrows. Leaf lobes are bristle-tipped. Fall color is can be crimson, golden-orange, or russet. **Prefers sun to part shade in well drained loamy sand.** The northernmost eastern oak, it is the most important lumber species of red oak—used for flooring, furniture, millwork, railroad cross-ties, mine timbers, fence posts, pilings, and pulpwood. A popular shade and street tree, with good form and dense foliage. One of the most rapid-growing oaks, it transplants easily, is hardy in city conditions, and endures cold. **Provides food and nesting sites for birds and woodland wildlife.**



Black Willow— *Salix nigra*—E , S

Found in swamps, wet meadows, and along streams in rich alluvial soils. A multiple stemmed, open crowned, tree, grows to 65' tall, prefers **full sun**, in **clay loam or sandy soils**. Blooms from February to June with inconspicuous flowers arranged in elongate clusters; male and female flowers on separate trees. A fast-growing tree, with leaf blades up to 5 inches long, narrow and tapering to an elongate tip, margins finely serrate. Bright yellow-green twigs bear yellow-green catkins. Seeds wind-borne on silky hairs. The bark is deeply furrowed. Live stakes have excellent rooting ability and produce fibrous roots. **Leaf drops replenish organic life in streams and it provides wildlife habitat and shade.** This is the largest and most important willow with one of the most extensive ranges across the country.



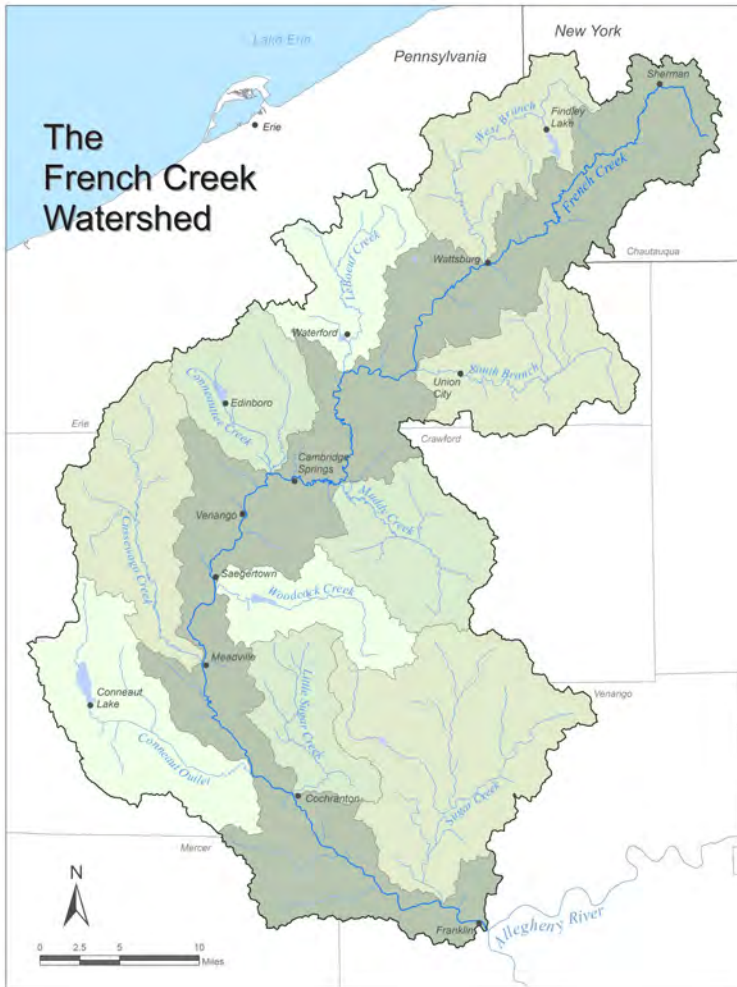
American Linden / Basswood—*Tilia Americana*— JJW, S

Rich woods. A stately, wide-spreading deciduous tree, 60-80 ft. tall. Conical in its younger form, the crown becomes rounded with age. Broadly oval leaves sometimes change to yellow in fall but often turn brown and become somewhat unsightly. Flowers are inconspicuous but fragrant. When flowering, the trees are full of bees and produces a strongly flavored honey. **Tolerates sun to shade in moist, rich, well-drained, loamy soils.** The soft, light wood is especially useful for making food boxes, yardsticks, furniture, and pulpwood. Native Americans made ropes and woven mats from the tough fibrous inner bark.



**These Native PA Species TREES are also good for Stormwater Management
in Erie County but have no known local source:**

| <i>Latin Name</i> | PA Native Habitat |
|--|--|
| <p>Cucumber Tree <i>Magnolia</i> <i>Acuminata</i></p> | <p>Rich upland woods and slopes. A hardy, large, round-topped, deciduous tree. Grows 60-75 ft. tall and wide. Its leaves are 6-10 in. long, deep-green in summer and yellow-brown in fall. Flowers are not showy; only 2 in. across and greenish in color occurring at the top of the tree. They are followed by a cucumber-like fruit which turns from green to red. Tolerates sun to shade in rich moist to wet acidic soil.</p> |
| <p>Eastern Cottonwood <i>Populus Deltoids</i></p> | <p>Found on riverbanks, floodplains in rich alluvial soils. A large-canopied deciduous tree with upright limbs growing to 100 ft. or more. Catkins appear before leaf emergence. Large, papery, coarsely toothed, triangular, medium-green leaves turn yellow in fall. Pendulous clusters of flowers without petals in late March and early April. Seeds wind-borne on a tuft of cottony hairs—thus the name. A fast growing species that is often short lived. Tolerates sun to shade in moist sandy, loamy or clay loam soils.</p> |
| <p>BigTooth Aspen <i>Populus</i> <i>Grandidentata</i></p> | <p>Early successional woods and flood plains. A columnar tree 50-75 ft. tall. Toothed leaves are cottony-white on the lower surface, especially when the tree is young. The slender trunk's whitish bark, becomes furrowed at base and darker gray with age. Silvery catkins appear before leaves. Deciduous foliage becomes golden-yellow in fall. Big Tooth Aspen is a pioneer tree after fires and logging and on abandoned fields, short-lived and replaced by conifers. The foliage, twig buds, and bark are consumed by wildlife. Prefers full sun and consistent moist, rich soils.</p> |
| <p>Pitch Pine <i>Pinus rigida</i></p> | <p>Found only in the very southern part of Venango County, Pitch Pine is a small-to-medium-sized -at 40-70 ft. -tree which matures at 8-12 years. It is an evergreen with an irregular, globular form; twisting, gnarled, drooping branches; and scaly, reddish-brown bark which eventually becomes black. It has stiff, yellow-green needles, in clusters of three and cones occur in whorls of 3-5. This hardy species is resistant to fire and injury, forming sprouts from roots and stumps. Adapts to the driest, most unproductive sites and readily sprouts back after disturbance. Attracts: squirrels, rabbits, deer, quail, pine warblers, pine grosbeaks, chickadees. Larval host for the Pine-devil Moth. Prefers Full Sun in Acidic Dry, rocky or sandy soil. (Intolerant of shade but salt tolerant.)</p> |
| <p>Hop-hornbeam <i>Ostrya virginiana</i> S</p> | <p>Found on dry wooded slopes, often on soils high in calcium carbonate. Hop-hornbeam is a graceful, slow growing, understory deciduous tree with a trunk that looks like sinewy muscles and a rounded crown of slender, spreading branches growing 30-50 ft. The loose bark, in narrow strips, covers the often twisting trunk. Catkins bloom in April. Oval-pointed, mature leaves vary in size and turn a mild yellow in fall. Fruits are a hanging, hop-like structure. The common name refers to the resemblance of the fruit clusters to hops, an ingredient of beer. The nutlets and buds are eaten by bobwhites, pheasants, grouse, deer, and rabbits. It is not sensitive to drought but will not tolerate flooding. Notoriously sensitive to salt. Prefers full Sun to Part Shade on Dry to moist rich, well-drained soils.</p> |
| <p>Sweet Pignut Hickory <i>Carya ovalis</i></p> | <p>Found on rich dry woods and bluffs. The Pignut Hickory is a medium to medium-large deciduous tree growing 50-80' tall, with a straight trunk and a broadly oblong crown. Young trees have relatively coarse gray bark with irregular furrows and ridges, while the bark of older trees is more shaggy. The upper leaflet surfaces are medium to dark green, hairless, and shiny, while the lower leaflet surfaces are dull olive-green and usually hairless. Blooms from mid-to late spring for about 1-2 weeks. Sweet Pignut Hickory occurs primarily as scattered trees, rather than in colonies. Treehoppers, Northern Walkingstick, Underwing Moths, Banded Hairstreak and Hickory Hairstreak butterflies, feed on the foliage and catkins. Prefers full or partial sun and fertile deep soil containing loam and organic material with well-balanced moisture levels.</p> |
| <p>Scarlet Oak <i>Quercus coccinea</i></p> | <p>Found on dry upland slopes and ridges in poor soil in a variety of habitats including mixed forests. Best known for its brilliant autumn color, the Scarlet Oak grows to 82ft by 49ft at a medium to rapid rate. It can tolerate strong winds but not maritime exposure. A popular and handsome shade and street tree, the lumber is marketed as Red Oak. It has shallowly lobed, dull green leaves, and acorns with a shallow cup. It begins to bear fruit at age 20 biennially. Bloom Time: March to May. Acorns provide food for squirrels, chipmunks, mice, deer, wild turkey, bluejays, and redheaded woodpeckers. Prefers moist soil, but also does well in poor, dry, sandy, or gravelly soils in semi-shade (light woodland) or no shade.</p> |
| <p>Black Oak <i>Quercus velutina</i></p> | <p>A dominant forest tree, Black Oak is a deciduous tree found in upland woods on moist to dry soils. It grows 50-60 ft. high and the spread is variable. Large, spreading branches form an open crown that is often quite irregular. Catkins appear just before or with the appearance of new leaves. Thick, glossy, pointed-lobed leaves often turn orange or red in fall. Blooms March to May. Water Use: Medium. Attracts: songbirds, ground birds, mammals, Butterflies and Hummingbirds. Easily distinguishable by the yellow or orange inner bark, formerly sources of tannin, of medicine, and of a yellow dye for cloth known as quercitron. The wood is used for flooring, boxcars, and cooperage. Prefers full Sun to part Shade in dry, sandy to moist, rich soils.</p> |



THE
**FRENCH
 CREEK**
watershed
 A COMMUNITY TREASURE

